

Advantages

- High reliability
- For large current
- Low power consumption
- Extended measuring range
- For railway

Open Loop Type



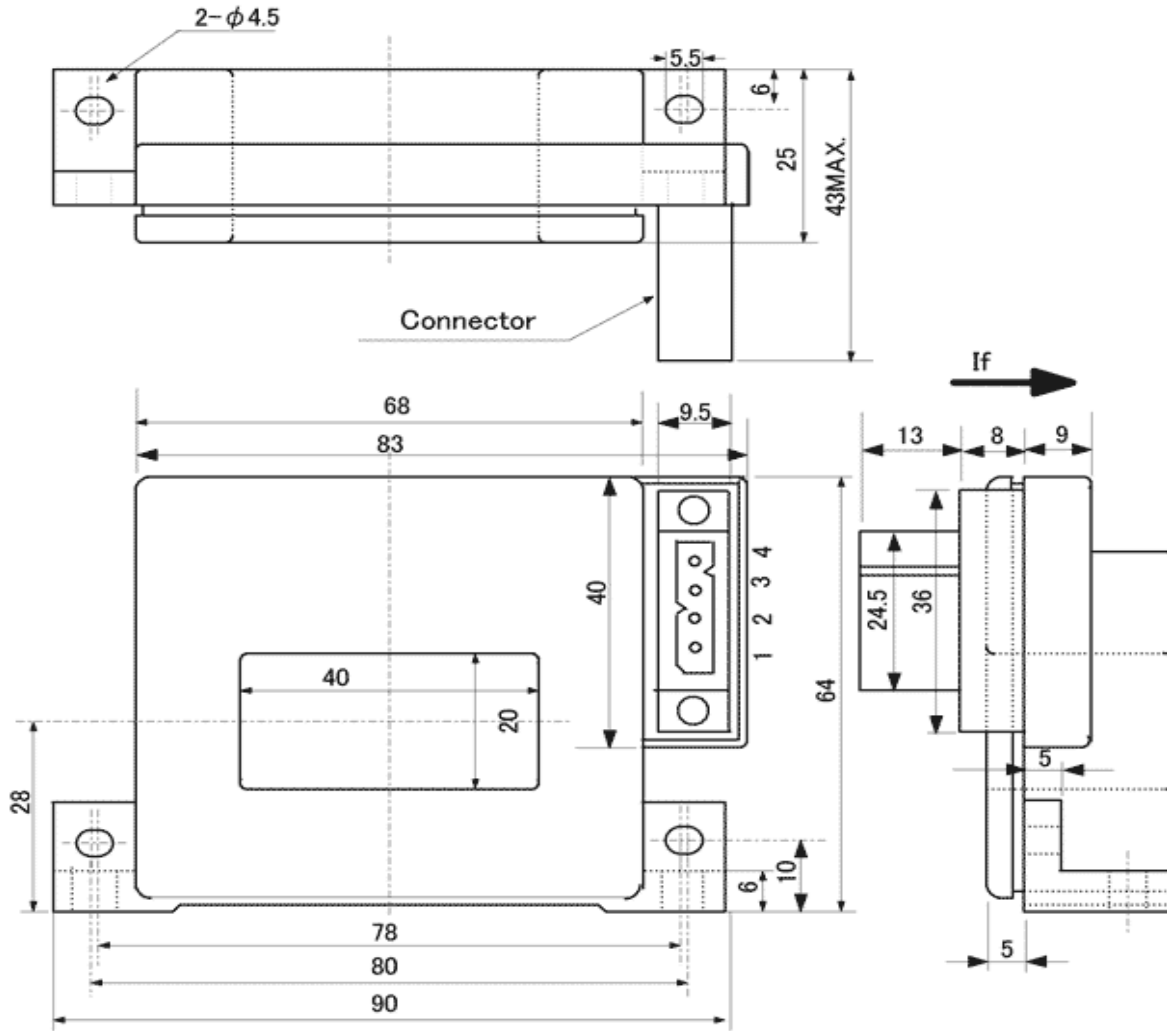
Specifications

Ta=25°C

| Product name | Code:2211 | | CA3-2000 |
|------------------------|-----------|-------|---------------------------------|
| | Symbol | Unit | |
| Nominal input current | If(n) | AT | ±2000 |
| Saturation current | If(s) | AT | ±2200 |
| Nominal Output Voltage | Vh | V | ±10±0.100 [at If(n)] |
| Load resistance | RL | Ω | 2k |
| Offset Voltage | Vo | V | 0±0.030 [at 0A] |
| Supply Voltage | Vcc | V DC | ±15±5% |
| Consumption Current | Icc | mA | ±35 Max. |
| Response Speed | Trr | μ sec | 15 Max. [at di/dt=100A/μ sec] |
| Thermal Drift of Vh | | %/°C | ±0.05 Max. [at Ta=-40 to+80°C] |
| Thermal Drift of Vo | | mV/°C | ±0.8 Max. [at Ta=-40 to+80°C] |
| Dielectric Strength | | kV | AC 2.5 [with 50 or 60 Hz 1min.] |
| Insulation Resistance | | Ω | 500M Min. [at 500V DC] |
| Operating Temperature | Ta | °C | -40 to +80 |
| Storage Temperature | Ts | °C | -40 to +85 |
| Hysteresis Error | | mV | 35 Max. [at If --> 0] |

Dimensions

Unit : mm

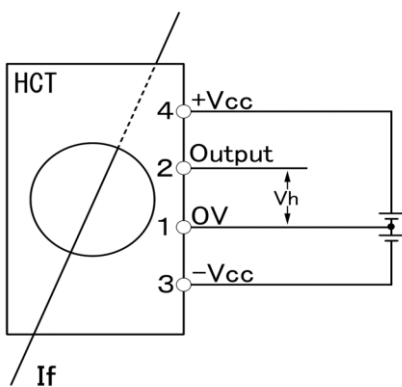


Connector Type[SMS 4PH-4JD28] Maker[SOURIAU]

CA3-21027

| Product Name | Mass |
|--------------|------|
| CA3-2000 | 228g |

Connection



NANA ENGINEERING NANA ENGINEERING CO.,LTD.

1-22-5,Morino,Machida-shi,Tokyo 194-0022

Machida 310 Irago building 4F

E-Mail : nanaeng_sales@nana-e.com

URL : <http://www.nana-e.com>