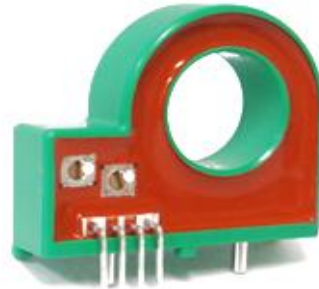


## Advantages

- Low power consumption
- Extended measuring range
- Compact and lightweight

Open Loop Type



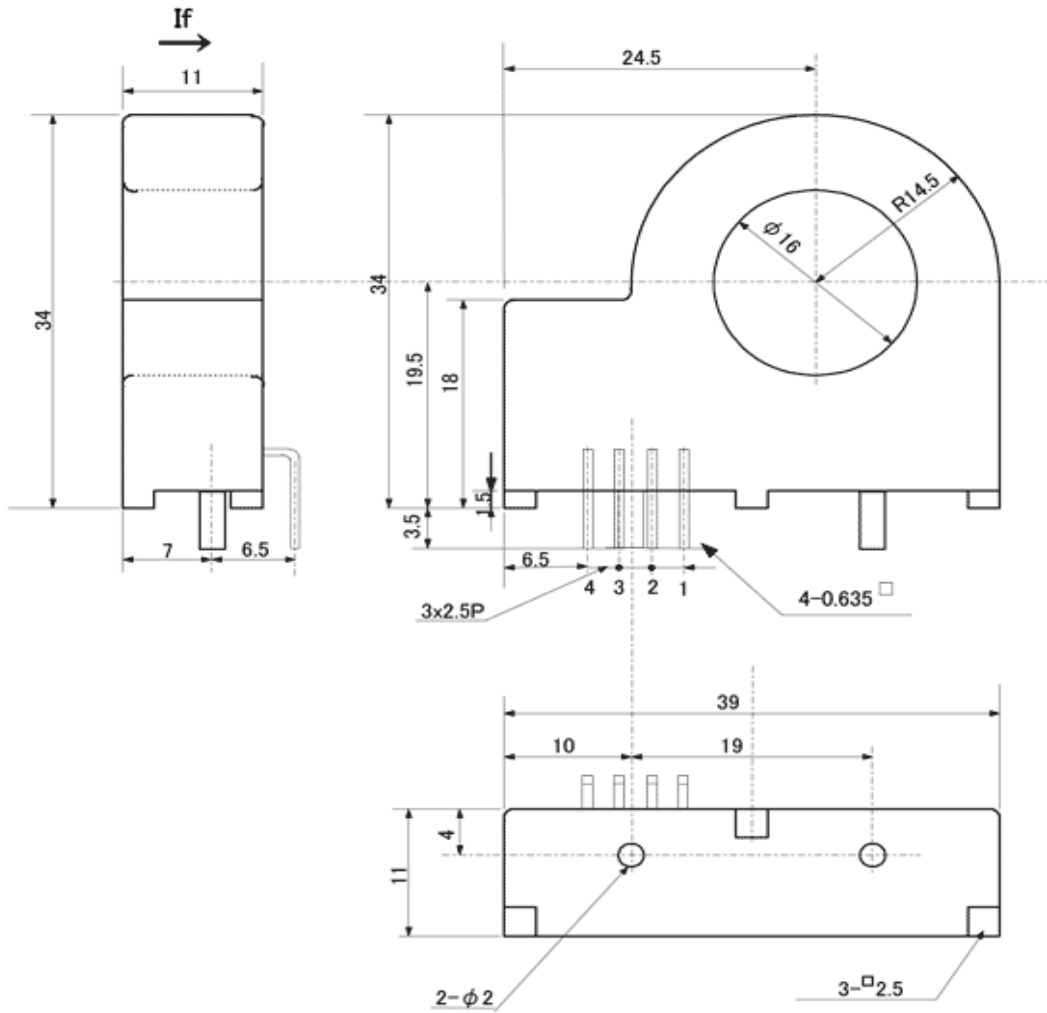
## Specifications

Ta=25°C

| Product name           | Code:1651 |       | CB-05GS                         |
|------------------------|-----------|-------|---------------------------------|
|                        | Symbol    | Unit  |                                 |
| Nominal input current  | If(n)     | AT    | ±50                             |
| Saturation current     | If(s)     | AT    | -50~+100                        |
| Nominal Output Voltage | Vh        | V     | Vo±2±0.050 [at If(n)]           |
| Load resistance        | RL        | Ω     | 10k                             |
| Offset Voltage         | Vo        | V     | 2.5±0.050 [at 0A]               |
| Supply Voltage         | Vcc       | V DC  | +11.4~+12.6                     |
| Consumption Current    | Icc       | mA    | 15 Max.                         |
| Response Speed         | Trr       | μ sec | 5 Max. [at di/dt=If(n)/μ sec]   |
| Thermal Drift of Vh    |           | %/°C  | 0.1 Max. [at If(n)]             |
| Thermal Drift of Vo    |           | mV/°C | ±2 Max. [at 0A]                 |
| Dielectric Strength    |           | kV    | AC 2.5 [with 50 or 60 Hz 1min.] |
| Insulation Resistance  |           | Ω     | 500M Min. [at 500V DC]          |
| Operating Temperature  | Ta        | °C    | -20 to +80                      |
| Storage Temperature    | Ts        | °C    | -25 to +85                      |
| Hysteresis Error       |           | mV    | ±20 Max. [at If --> 0]          |

Dimensions

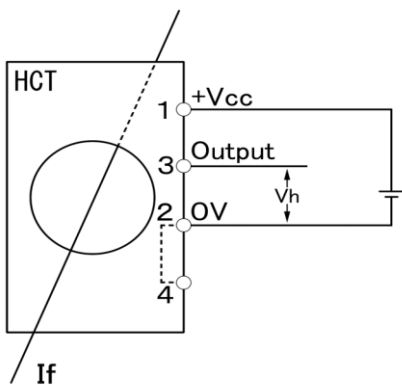
Unit : mm



CB-21015

|              |      |
|--------------|------|
| Product Name | Mass |
| CB-05GS      | 23g  |

Connection



**NANA** ENGINEERING CO.,LTD.  
ENGINEERING

1-22-5,Morino,Machida-shi,Tokyo 194-0022  
Machida 310 Irago building 4F  
E-Mail : nanaeng\_sales@nana-e.com  
URL : <http://www.nana-e.com>