

## Advantages

- Excellent accuracy
- Low thermal drift
- Fast response time
- Excellent linearity

## Closed Loop Type



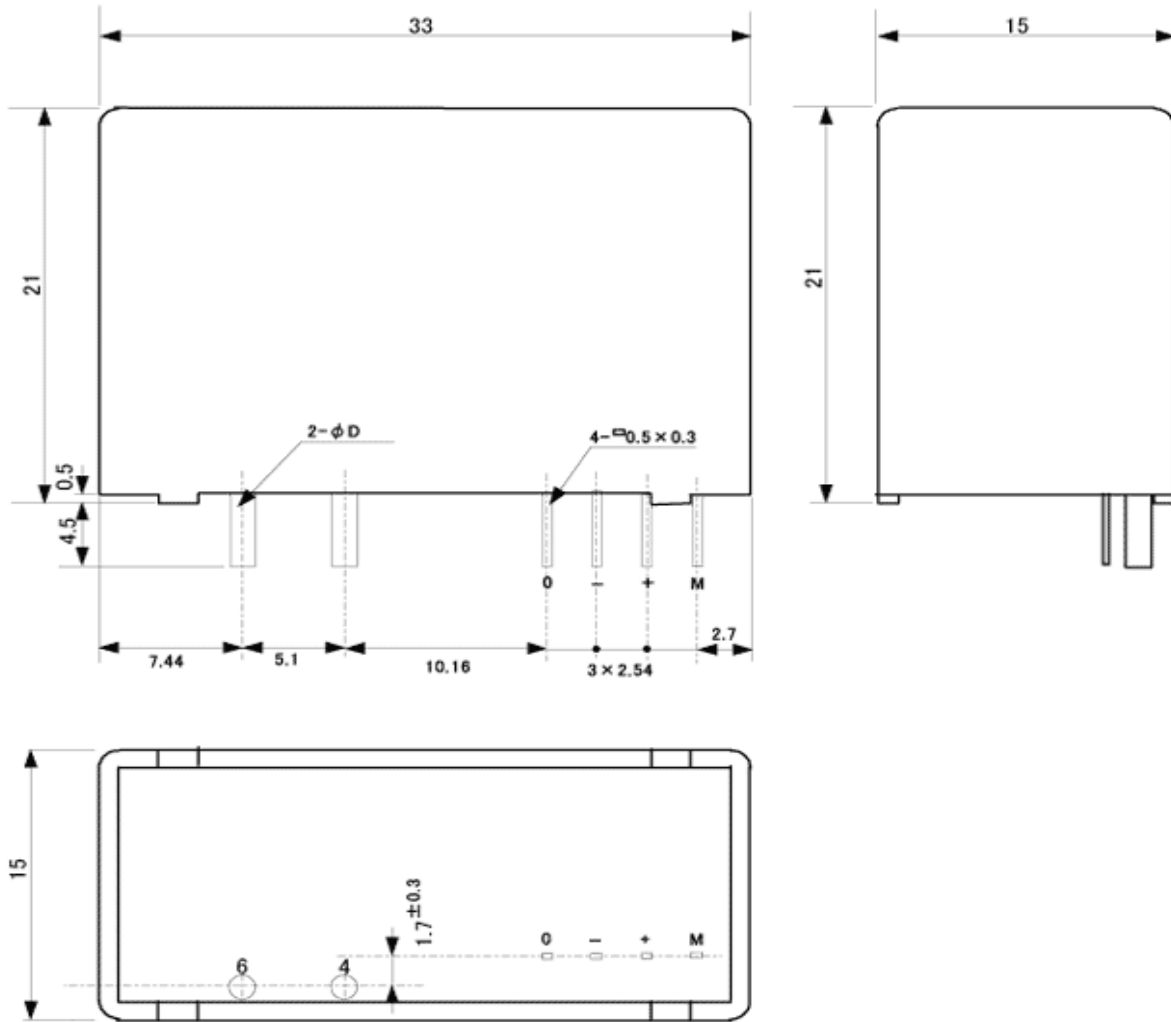
## Specifications

Ta=25°C

Product name	Code:1609		CNC-15V
	Symbol	Unit	
Nominal input current	If(n)	A	±15
Saturation current	If(s)	A	±35
Nominal Output Voltage	Vh(n)	V	±2.4±0.048 [at If(n)]
Load resistance	RL	Ω	50k
Offset Voltage	Vo	V	0±0.015 [at 0A]
Supply Voltage	Vcc	V DC	±15±5%
Consumption Current	Icc	mA	100
Response Speed	Trr	μ sec	1 Max. [at di/dt=If(n)/μ sec]
Thermal Drift of Vh		%/°C	±0.05 Max. [at If(n)]
Thermal Drift of Vo		mV/°C	±1 Max [at 0A]
Dielectric Strength		kV	AC 2.5 [with 50 or 60 Hz 1min.]
Insulation Resistance		Ω	500M Min. [at 500V DC]
Operating Temperature	Ta	°C	-20 to +75
Storage Temperature	Ts	°C	-25 to +85
Hysteresis Error		mV	±20 Max. [at If (n) --> 0]

Dimensions

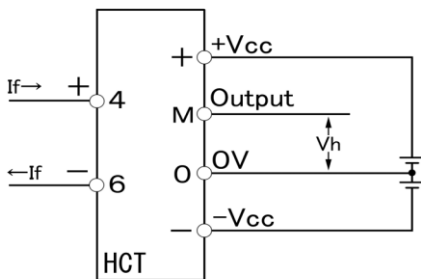
Unit : mm



CNC-21011

Product Name	Mass	D $\phi$
CNC-15V	23g	1.0

Connection



**NANA ENGINEERING** NANA ENGINEERING CO.,LTD.

1-22-5, Morino, Machida-shi, Tokyo 194-0022  
 Machida 310 Irago building 4F  
 E-Mail : nanaeng\_sales@nana-e.com  
 URL : <http://www.nana-e.com>